

# Secure OASIS use/setup

## First Run

The first time you use Secure OASIS you will be prompted to accept a host fingerprint (see right). Click on the **Yes** button to proceed.

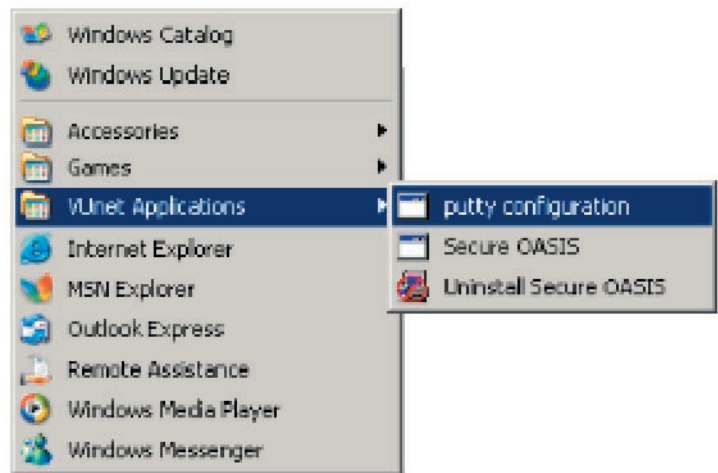


## Printer Setup

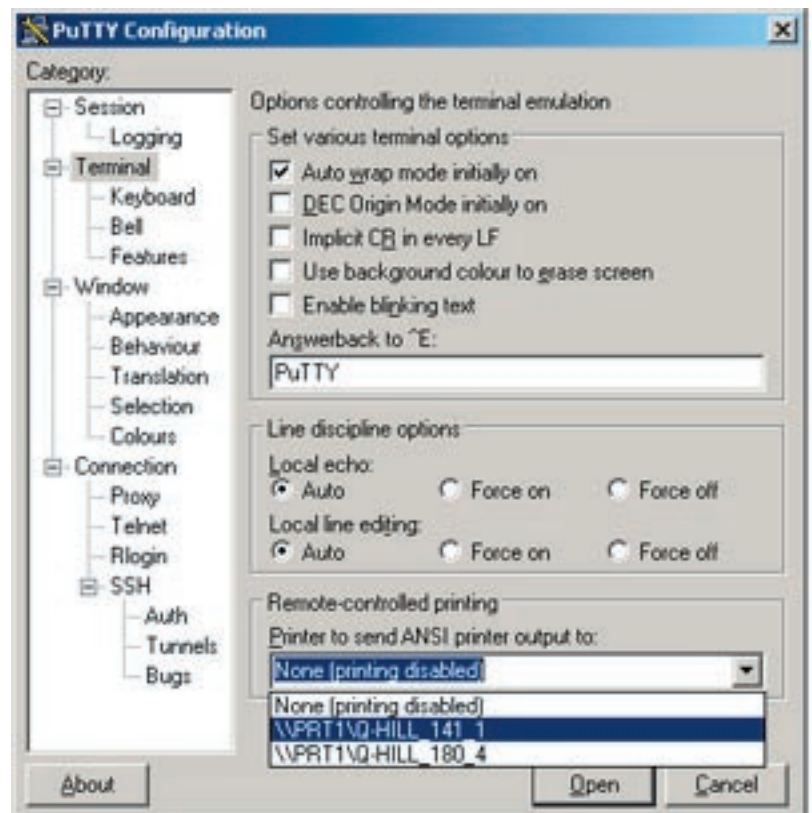
if you wish to print your schedule to your local printer, you can use the OASIS "PRINT" command when viewing your schedule.

To configure Putty (the software you use to connect to OASIS) to print follow these steps:

1. Select your Start/Program menu
2. Select *VUnet Applications*
3. Select *putty configuration* (see right)
4. In the **PuTTY Configuration** window, select *Terminal* in the left frame.
5. In the lower right portion of the window select your local printer (see right)



Continued on next page.



## Printer Setup (continued)

6. Select *Session* in the list on the left
9. In the *Saved Sessions* section in the middle-right, select *Default Settings*
10. Next to *Default Settings*, select the *Save* button
11. In the lower-right corner, select the *Cancel* button (see right)
12. Double-click on the *Secure OASIS* file on your desktop and connect to OASIS.

